

Why not consider the other collections available from The Choices brand

Windows, Doors, Conservatories & Orangeries manufactured from state of the art PVCU and Aluminium for Domestic and Commercial properties.

Standard Door Specification / Upgrades



Kömmerling Doors

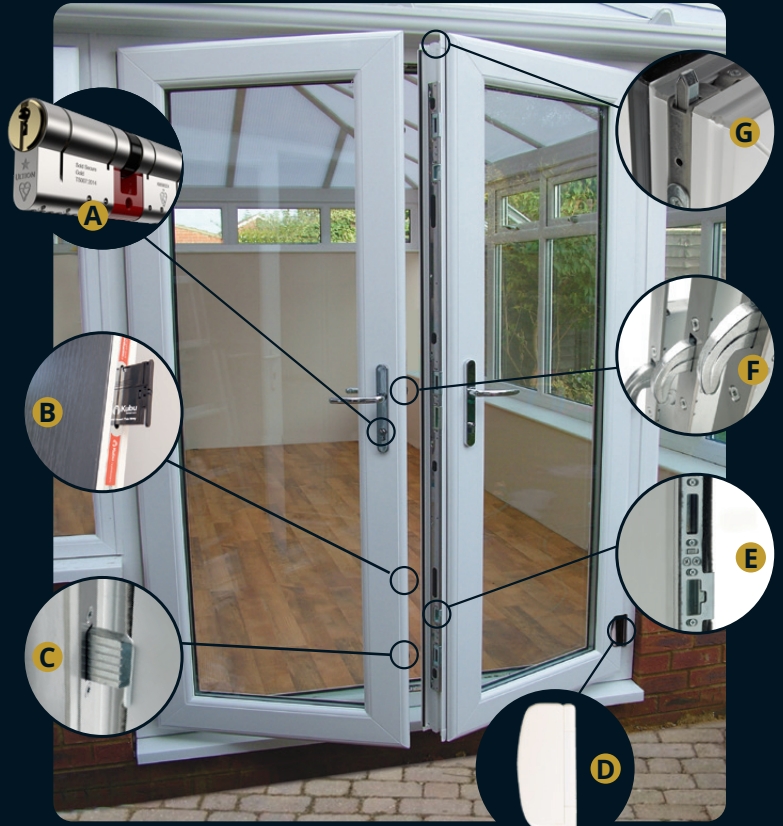
'Choices' doors have a high security specification as standard



Standard Specification:

- A** ULTION cylinder
- B** Kubu ready*
- C** 25mm throw direct drive centre compression deadbolt provides high level of security in the centre of door
- D** Adjustable Dynamic hinge
- E** Fully adjustable security keeps
- F** Hook claws top and bottom operate in reverse directions for anti-lift
- G** Shoot bolt bullet point

*Kubu smart kit purchase required by home owner



PAS 24 Enhanced Security as standard

Secured by Design as standard

Subject to the addition of 6.8mm laminate glazing

Secured by Design



Police Preferred Specification

ULTION PLUS Cylinder upgrade



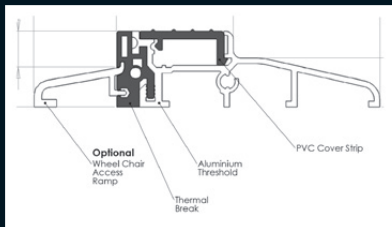
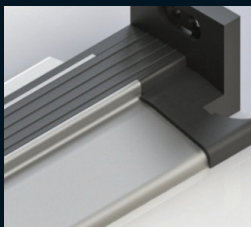
Features and Benefits

- ✓ Eleven Pin Locking
- ✓ 294,970 Lock Combinations
- ✓ 100,000 Cycle Endurance Test
- ✓ Snap Tested Resistant Sections
- ✓ Drilling, Pick and Bump Tested
- ✓ Molybdenum Alloy Core
- ✓ Available on any new 'Choices' door
- ✓ All Locks can have the same key
- ✓ Single, Double, Sliding and Bi Folding
- ✓ Retro Fit into existing doors

Ultion Plus cylinders are available to fit to any new 'Choices' single, double or bi-fold door and can be retrofitted to existing 'Choices' doors

The basis of the high security is the Molybdenum Alloy Core (Centre section) which as soon as the lock comes under attack, goes into 'Lockdown Mode'. The first two sections are designed to 'snap' off - then the attacker will be confronted with the high security 'core'.

Please note Ultion Plus cylinders are only supplied with 3 keys per set, so additional keys may be required when ordering keyed alike cylinders as part of a set



Mobility Threshold

Part M thermally broken mobility threshold available in anodised silver or gold with optional access wheel chair ramps