

SIMPLE • SUSTAINABLE • COMPLIANT

'Choices' Aluminium Lift & Slide Doors

ALUK S140 Lift & Slide Doors



S140 LIFT & SLIDE DOOR

Performance and accreditations

U-Value Double Track 2500x2725mm (Double Glazing) 1.0 Ug	1.3W/m ² k
U-Value Double Track 2500x2725mm (Triple Glazing) 0.6 Ug	1.0W/m ² k
Air Permeability	Class 4 (600 Pa)
Water Tightness	Class 8A (450 Pa)
Wind Resistance	Class 4C (1600 Pa)

S140

1.3W/m ² k
1.0W/m ² k
Class 4 (600 Pa)
Class 8A (450 Pa)
Class 4C (1600 Pa)

System

Depth	140mm (Twin Rail) / 217.5mm (Triple Rail)
-------	---

Size and weight limits

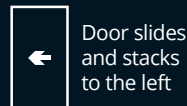
Maximum Outer Frame W X H: Double Track	4982mm x 3100mm
Maximum Outer Frame W X H: Triple Track	6400mm x 3100mm
Maximum Leaf W X H: Double Track	2500mm x 3029mm
Maximum Leaf W X H: Triple Track	2190mm x 3029mm
Maximum Leaf Weight	420kg

Glazing

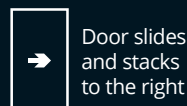
Glazing Thickness	24mm - 40mm
-------------------	-------------

Configurations

DOUBLE TRACK



TRIPLE TRACK



Colour Options

for fast delivery

White RAL 9910hg	Black RAL 9005m
Anthracite Grey RAL 7016m	

SIMPLE • SUSTAINABLE • COMPLIANT

ALUK[®]

'Choices' Aluminium Lift & Slide Doors

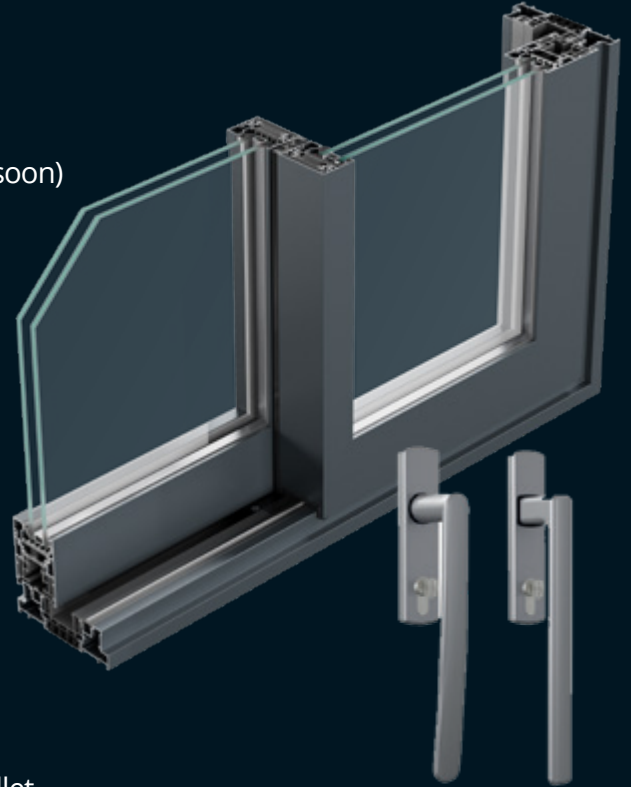
ALUK S140 Lift & Slide Doors



SUSTAINABLY SOURCED
78% RECYCLED
ALUMINIUM BILLET CONTENT

Key Features

- ✓ S140 offers slim sightlines with impressive strength and performance, making it suitable for almost any project
- ✓ Lift & Slide for ease of use and smooth function
- ✓ Slim interlock option of 44mm face width
- ✓ Accepts 24mm - 48mm glazing
- ✓ Max 420kg panel weight for larger projects *unglazed
- ✓ QuiK Clip® - Clip in bead technology for faster glazing (coming soon)
- ✓ Dedicated sub cill
- ✓ Available in double and triple track configurations
- ✓ Ex-stock colours: White (9910HG), Anthracite Grey (7016M), Black (9005M), Grey/White, Black/White - Fast delivery
- ✓ 2-Pane Door U-value compliant of 1.3W/m²k (Refurbishment) 24mm double glazed unit (DGU)
- ✓ 3-Pane Door U-value compliant of 1.4W/m²k (Refurbishment) 24mm double glazed unit (DGU)
- ✓ 2-Pane Door U-value compliant of 1.0W/m²k (New Build) 40mm double glazed unit (DGU)
- ✓ 3-Pane Door U-value compliant of 1.1W/m²k (New Build) 40mm double glazed unit (DGU)
- ✓ Min sash size 730mm x 1370mm
- ✓ Sustainably sourced; 78% recycled content of the aluminium billet



Why not consider the other collections available from *The Choices brand*
Windows, Doors, Conservatories & Orangeries manufactured from state of the art
PVCU and Aluminium for Domestic and Commercial properties.